

Mineral Prospektering i Sverige AB (MPS) is pleased to share the results of the latest diamond drill program over three of its 100% owned project areas, namely Skellefte Belt Licences – **Bjurtraskgruvan target**, Huornaisenvuoma Licences - **Ahmavuoma Discovery Zone target &** Rockliden Licence – **Rockliden 2 target**, see Location Map – figure 1.

A total of 4,431.90m were drilled from 15 DDH's. The Skellefte Belt Licences and Rockliden Licence were 1st pass drill testing of priority VTEM anomalies generated through the large summer 2022 VTEM survey (total 4031 line km's). Whilst the Ahmavuoma drilling of the 'Discovery Zone' was a follow-up of the successful spring 2022 drill program. Mineralization at Bjurtraskgruvan and Rockliden are VHMS style whilst at Ahmavuoma IOCG.

Selected highlights include:

Bjurtraskgruvan Target (Bjurliden nr 2 Exploration Licence)

23SBJK009 from 194.35m: **15.90m @ 1.96% Cu, 0.26g/t Au, 12.7g/t Ag**

including from 197.35m: **3.15m @ 5.00% Cu, 0.53g/t Au, 22.8g/t Ag**

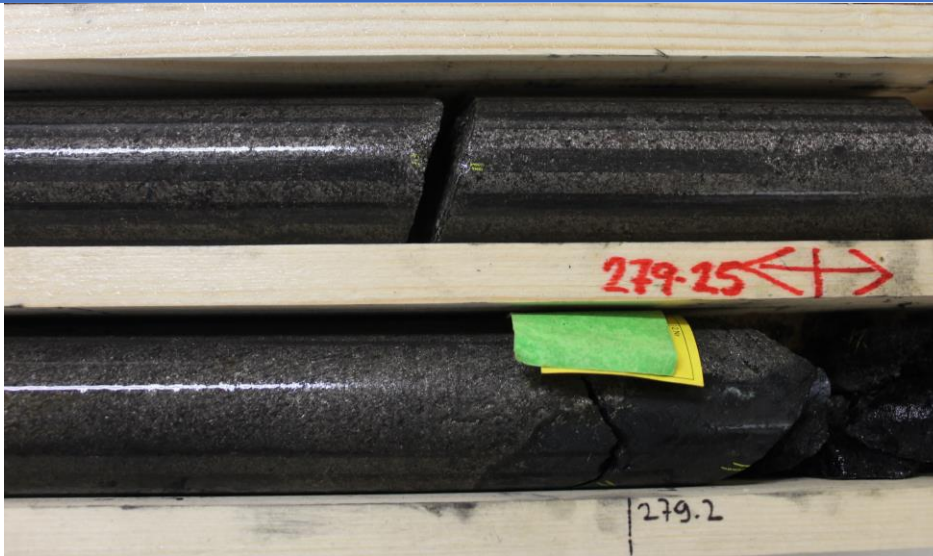
23SBJK012 from 277.45m: **17.50m @ 0.91% Cu, 0.42g/t Au, 16g/t Ag, 6.54% Zn**

including from 277.45m: **4.25m @ 0.81% Cu, 0.14g/t Au, 13.3g/t Ag, 14.15% Zn**

23SBJK014 from 197.25m: **4.30m @ 3.36% Cu, 0.91g/t Au, 14.8g/t Ag**

from 215.30m: **3.30m @ 1.06% Cu, 0.18g/t Au, 5.1g/t Ag**

from 222.00m: **15.00m @ 1.02% Cu, 1.02g/t Au, 5.2g/t Ag**



23SBJK012 NQ2 core diameter 50mm Massive Po Zn mineralization

Widths of mineralization at Bjurtraskgruvan are believed to be close to True Width.

Ahmavuoma Discovery Zone Target (Huornaisenvuoma nr 5
Exploration Licence)

**23AHM013 from 278.35m: 120.95m @ 0.61% Cu, 0.11g/t Au, 180ppm
Co, 75ppm Mo**
including from 378.90m: **20.40m @ 2.20% Cu, 0.46g/t Au, 558ppm Co,
108ppm Mo**



23AHM013 NQ3 core diameter 45mm high grade Cpy mineralization

Widths of mineralization at Ahmavuoma are believed to be 60-70% of True Width

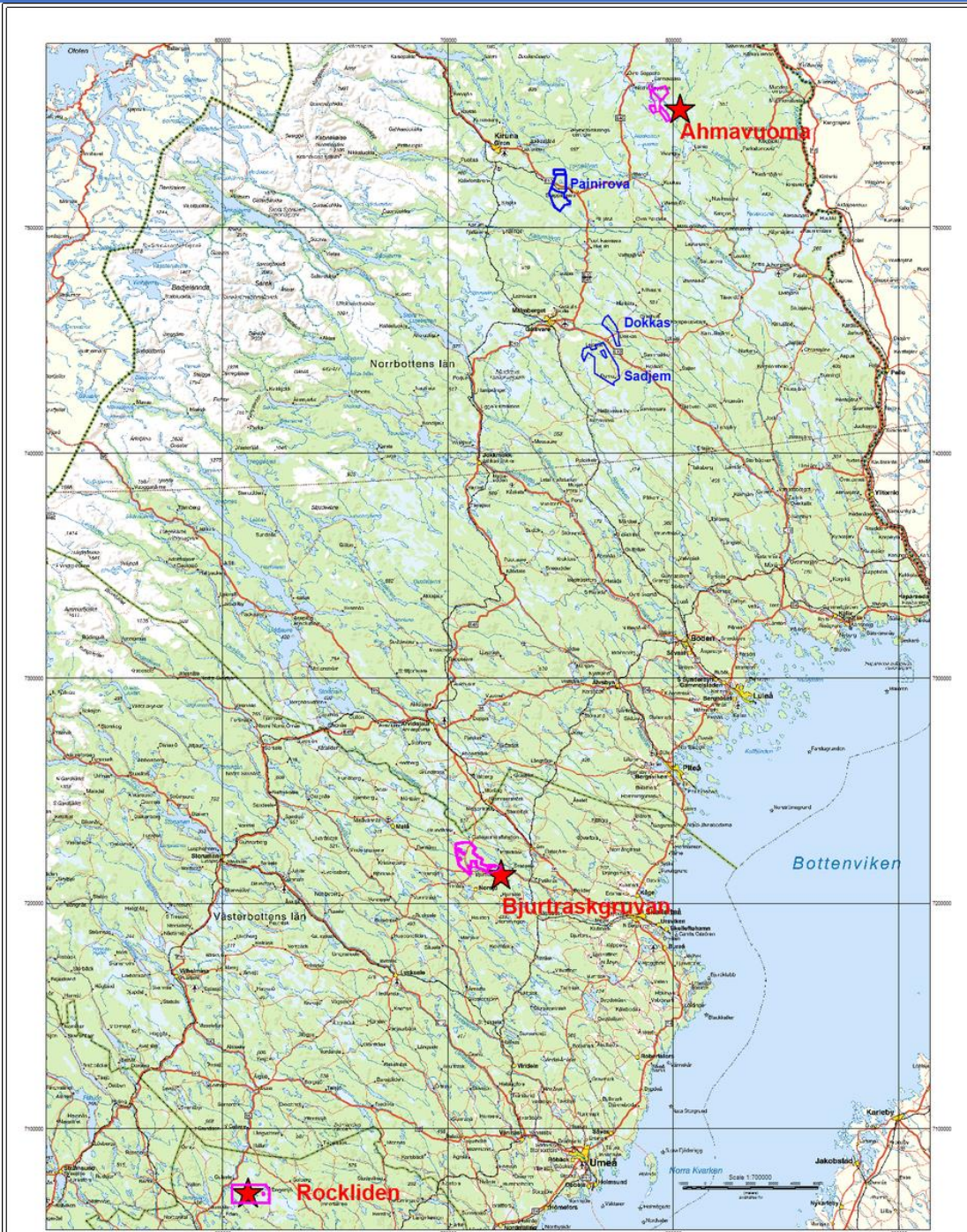
Rockliden RCK2 Target (Rockliden nr 101 exploration Licence)

23RCK001 from 170.00m: **12.50m @ 1.10% Cu, 16.2g/t Ag**
including from 179.20m: **3.30m @ 2.60% Cu, 33.3g/t Ag**



Rockliden 23RCK001 – NQ2 core 50mm diameter – Cpy, Po mineralization

Widths of mineralization at Rockliden, with regard to True Width, are not known at present, but drilling was perpendicular to the VTEM and follow-up ground geophysical target. Drilling of the target was forced to cease early due to the spring thaw.



Mineral Prospektering i Sverige AB
Tenure and 2023 drill projects



Fig 1.

Figure 1: Location of MPS tenure and location of the 2023 Drill Projects highlighted

Background Information on the drilling

Drilling was undertaken by Oy Kati AB utilising the 'Semi-Closed System' to ensure the highest environmental standards, drilling predominantly NQ2 core and NQ3 Triple tube (where rock conditions required it). Deviation surveys showed minimal movement of the drillholes. Cores were orientated. BHEM was undertaken on all drillholes by GRM Services Oy of Vaanta Finland.

All drilling was undertaken with full legal Work Plans in force. Cores were geologically and petrophysically logged by MPS and Avanna Exploration Services Geologists and sampled by MPS Geologists. MPS personnel ensured full chain of custody from rig through to MPS Malå logging and core cutting facilities. All samples were cut in half and forwarded 200m to ALS Malå for processing by WEI-21, PUL-32, LOG-24, CRU-31, SPL-22Y, CRU-QC, PUL-QC and analysed by ALS Minerals Loughrea, Ireland using codes Au-AA26 50grm for Gold, ME-ICPORE for Ag, As, Bi, Ca, Cd, Cu, Fe, Hg, Mg, Mn, Mo, Ni, P, Pb, S, Sb, Tl & Zn for all samples and for Ahmavuoma in addition ME-MS81h (REE's). OREAS Certified Reference Materials (mineralization style specific) including OREAS Coarse and fine Blanks were inserted every 10 – 25 samples.

Competent Persons Statement The information in this note on the Exploration Results is based on information compiled by Mr James (Jim) Coppard CGeol EurGeol MSc DIC who is the Managing Director of Mineral Prospektering i Sverige AB. Mr Coppard is a Fellow of the Geological Society of London (16824), a Chartered Geologist and Euro Geologist. Mr Coppard has sufficient experience of relevance to the styles of mineralization and the types of deposits under consideration, and to the activities undertaken, to qualify as Competent Person.

Mineral Prospektering i Sverige AB is a Privately owned, Malå, Sweden based Mineral Exploration Company owned 90% jointly by the directors Graham Brown and James (Jim) Coppard. All Exploration Licences are 100% owned by MPS with no underlying Agreements or Royalties. MPS are seeking appropriate partners to advance our projects.

Appendix 1

Bjurtraskgruvan Mineralized Intervals											
DDH	Easting	Northing	Azi	Dip	EOH	From (m)	Width (m)	Cu%	Au g/t	Ag g/t	Zn %
23SBJK009	722450	7215835	0	-90	247.40	194.35	15.90	1.96	0.26	12.7	
including						197.35	3.15	5.00	0.53	22.8	0.61
and						218.75	6.95	0.57	0.09	1.8	
23SBJK010	722400	7215840	0	-90	292.60	161.20	1.15	2.41	0.29	27.6	0.18
and						219.40	1.70	1.56	0.31	8.0	
and						231.00	0.15	1.74	0.25	7.0	
23SBJK011	722350	7215835	0	-90	284.40	230.00	8.10	0.34	0.07	6.0	1.26
including						236.60	1.50	1.32	0.15	18.5	0.50
and						249.60	2.15	0.35			
23SBJK012	722300	7215810	0	-90	324.50	277.45	17.50	0.91	0.42	16.0	6.54
including						277.45	4.25	0.81	0.14	13.3	14.15
and						311.40	3.00	0.95	0.10	5.3	
23SBJK013	722200	7215780	0	-90	444.10	345.25	1.75			2.5	1.41
23SBJK014	722500	7215850	0	-90	248.40	125.80	0.35	0.28	0.02	3.0	6.46
and						197.25	4.30	3.36	0.91	14.8	0.27
and						215.30	3.30	1.06	0.18	5.1	
and						222.00	15.00	1.02	1.02	5.2	

Rockliden Mineralized Intervals											
DDH	Easting	Northing	Azi	Dip	EOH	From (m)	Width (m)	Cu %	Ag g/t	Zn %	Sb %
23RCK001	617308	7070592	15	-45	232.40	135.75	1.35	0.64	20.0	0.39	0.010
and						170.00	12.50	1.10	16.2	0.30	<0.005
including						179.20	3.30	2.60	33.3	0.38	<0.005
23RCK002	617288	7070689	15	-60	167.50	22.00	5.25	0.41	6.0		<0.005
including						25.50	1.75	0.80	14.7	0.42	<0.005
from						107.90	0.50	0.60	17.0	0.33	0.018

Ahmavuoima Mineralized Intervals											
DDH	Easting	Northing	Azi	Dip	EOH (m)	From (m)	Width (m)	Cu%	Au g/t	Co ppm	Mo ppm
23AHM001b*	797304	7548774	110	-50	375.20			NSI			
23AHM009	797254	7548606	110	-50	297.70	228.00	33.10	0.24		234	720
and						273.40	4.60	0.26	0.92	165	
23AHM010	797254	7548606	110	-62.5	397.90	298.00	45.50	0.34		289	309
including						338.90	4.60	0.31		573	2530
23AHM011	797229	7548535	110	-50	326.70			NSI			
23AHM012	797229	7548535	110	-62.5	460.00			NSI			
23AHM013	797280	7548676	110	-65	413.00	278.35	120.95	0.61	0.11	180	75
including						378.90	20.40	2.20	0.46	558	108

* 23AHM001b was an extension of 22AHM001 starting at 268.30m